

CREATIVITA' NELL'EMBEDDED @



COMPANY OVERVIEW



Experience



Since **1979**

SECO **designs** and **manufactures** **embedded systems all-in-house**, in **Italy**.

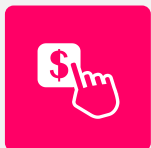
SECO offers a wide range of **standard modules**, **SBCs**, **systems** and **custom solutions** to leverage **innovative**, state-of-the-art **technologies**

HR



206 people

(31.12.2016)



€ 47+ mil.
in 2016

Turnover

BRANCH OFFICES



GLOBAL DISTRIBUTION

WW presence

KNOW HOW



DESIGN

Long experience
in **x86** & **ARM** design



MANUFACTURING

Design
and **production**
in **Italy**



SYSTEM INTEGRATION

Design & **Assembly**
of **mechanical parts**
and **touch display** solutions

EMBEDDED SOLUTIONS

Standard Products

Modular Solutions



Qseven



COM Express



SMARC



ETX/XTX

SBC



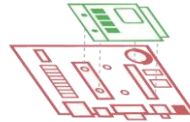
Embedded NUC



Pico-ITX

Semi-custom solutions

Custom carrier board
+
Modular solution

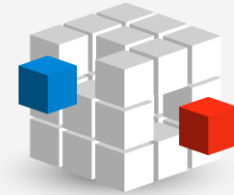


Modular HMI
& Boxed
Solutions



Full-custom solutions

End-to-end “tailored” solutions:
Full support from the concept development
to the complete System solution



VERTICAL MARKETS EXPERIENCE



KNOW-HOW

INNOVATION

CREATIVITY



INTERNET OF THINGS



POS / X-ACTION
TERMINALS



INDUSTRIAL
CONTROL
COMPUTERS



AVIONIC
INSTRUMENTS



GAMING



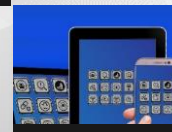
LAB INSTRUMENTS



INDUSTRIAL



SECURITY



MULTIMEDIA
DEVICES



TELEMATICS /
ETC SYSTEMS



VENDING



AUTOMOTIVE
INFOTAINMENT
SYSTEMS



DATA TABLET



TELEMATICS /
ETC SYSTEMS



BIOMEDICAL



DO IT
YOURSELF



MEDICAL
EQUIPMENT



ROBOTS



INFO KIOSKS



TELCO



SMART HOME



TRANSPORTATION

DESIGN

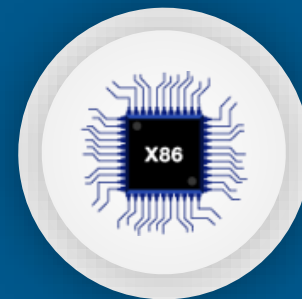
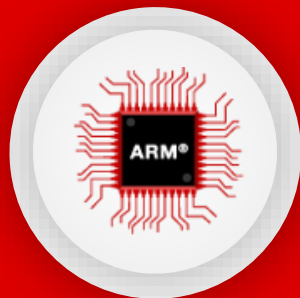
SECO ARM & X86 R&D departments



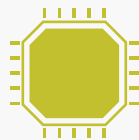
KNOW-HOW

INNOVATION

CREATIVITY



FPGA design



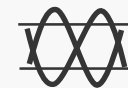
BIOS Engineering & Development



Software development



Mechanical Engineering & Development



Signal Integrity



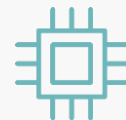
Analysis & Design



Drivers Engineering & Development



Hardware Engineering & Development



Firmware Development



Validation & Verification



Thermal Analysis

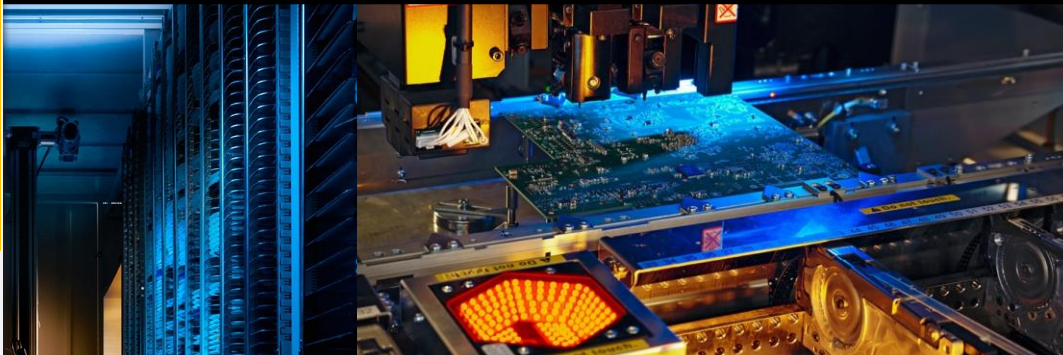
In-house MANUFACTURING



KNOW-HOW

INNOVATION

CREATIVITY



PROCUREMENT

INCOMING

KITTING

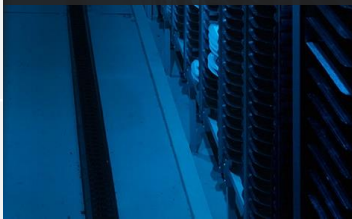
PCBA MANUFACTURING & SYSTEMS ASSEMBLING

TESTING

SHIPPING



Continued **investment in plant and machinery**



Total output capacity:
~ 200.000 comps/h

The speed of the lines is the actual value measured and not estimated from datasheets of P & P

SMT Line 1 & 2 : mass production line
SMT Line 3: mass production line/fast setup change

Last update: June 2017

SYSTEM INTEGRATION

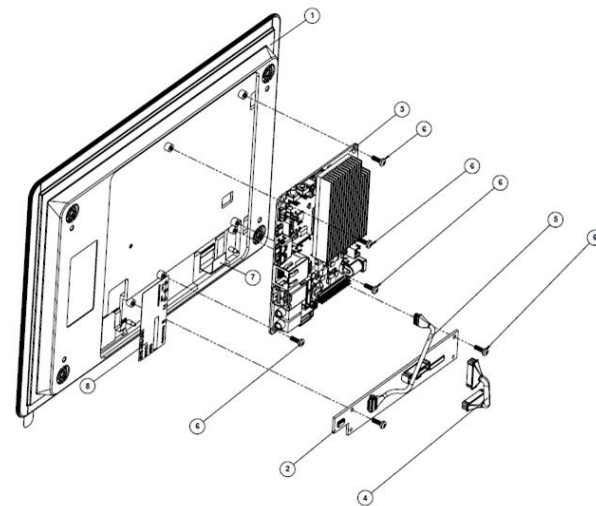


KNOW-HOW

INNOVATION

CREATIVITY

A project is more than just an embedded board, it includes screens, peripherals, enclosure and more.



When our customers have special requirements, we have the ability to **develop end-to-end custom solutions**

SYSTEM INTEGRATION - Assembly systems



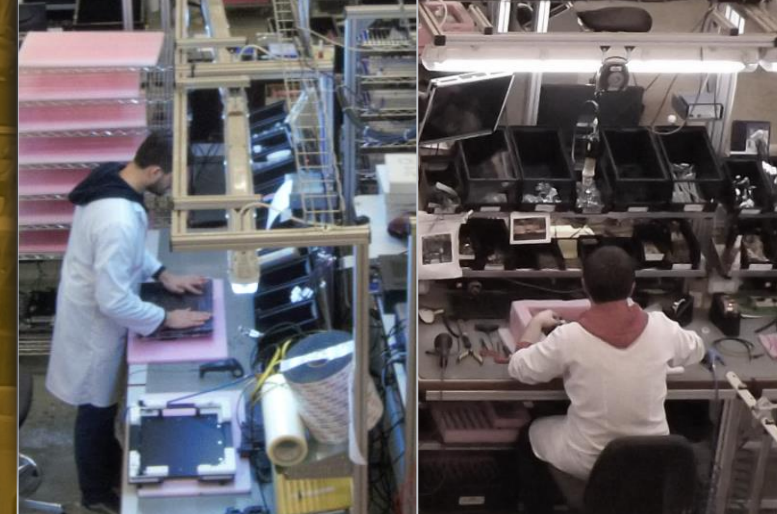
KNOW-HOW

INNOVATION

CREATIVITY

Assembly
of **systems** and **sub-
systems** following customer's
specifications oriented
towards the industry,
completely integrated with the
customer's specifications:

**TURNKEY
solutions**



TECHNOLOGICAL ECOSYSTEM



KNOW-HOW

INNOVATION

CREATIVITY



WORLDWIDE
SILICON
VENDORS

intel | IoT Solutions Alliance | Proven Partner | NXP | AMD
QUALCOMM | XILINX | NVIDIA | TEXAS INSTRUMENTS

OPERATING
SYSTEMS

Windows Embedded Partner | Linux | yocto PROJECT | ANDROID | WIND AN INTEL COMPANY

STANDARDS
&
CONSORTIUM

PICMG | COM Express | SGT STANDARDIZATION GROUP FOR EMBEDDED TECHNOLOGIES | ETX 3.0 Long Term Support | Z-WAVE ALLIANCE | embedded NUC™ | SMARC | HDMI™ | VESA MEMBER | S f f i g

ACADEMIC ECOSYSTEM



KNOW-HOW

INNOVATION

CREATIVITY



with important
**RESEARCH
INSTITUTES**





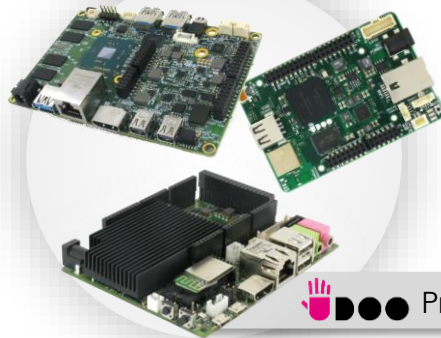
A **COMMITMENT** to train **tomorrow's professionals**



Belief in the potential of future generations in addition to investments and actions aimed at encouraging and forming **qualified professional specialists**.



NEW TARGET MARKETS



This is the latest challenge which SECO has taken on, opening up to a **NEW B2C TARGET**, ranging from **EDUCATIONAL** to **DO-IT-YOURSELF** and **MAKERS**

 Product family

Creativity borns from collaboration



KNOW-HOW

INNOVATION

CREATIVITY

INDUSTRY



Specialistic
Technologies



Multidisciplinarity



Networking



Different
Markets

ACADEMY

Creative projects

KNOW-HOW

INNOVATION

CREATIVITY

Smart Home

1° classified
on Bando 2
«PROGETTI DI
RICERCA E
SVILUPPO
DELLE PMI»



WeLight illuminates
people's daily
spaces through
**multimedia and
web content**

WeLight looks like a normal lamp,
but...

Smart wall switch to manage lights, energy
consumption and heating according to
the family's daily activities.



Maker Boards



funded with
**KICK
STARTER**

Agile, eXtensible, fast I/O Module



H2020 allowed SECO to invest in the **Programmable hybrid ARM/FPGA SoCs** area bringing **new solutions** to the embedded market through relationships with both **industrial and academic partners**

KNOW-HOW

INNOVATION

CREATIVITY

INDUSTRIAL PARTNERS



ACADEMIC PARTNERS



Our challenge:

keep pushing on the design of **flexible, high performance, cost effective** embedded computing solutions



Hardware design profiles/skills



Requirement capture/technical specs definition



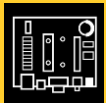
Schematic design (analog/digital electronics)



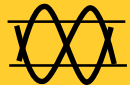
PCB Layout desing for Signal integrity on top class PC interfaces



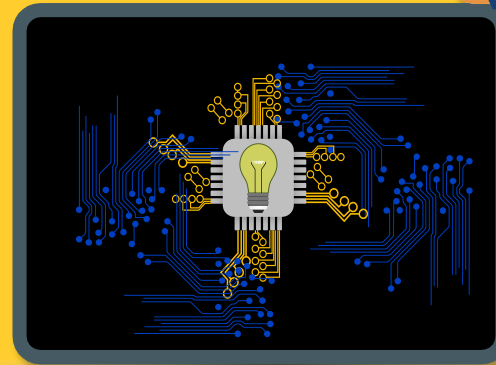
Thermal simulation / verification



Prototype debug / validation



EMC compliance



Software design profiles/skills

From the software perspective our main focus is to provide customers with **tailored version of Operating systems**

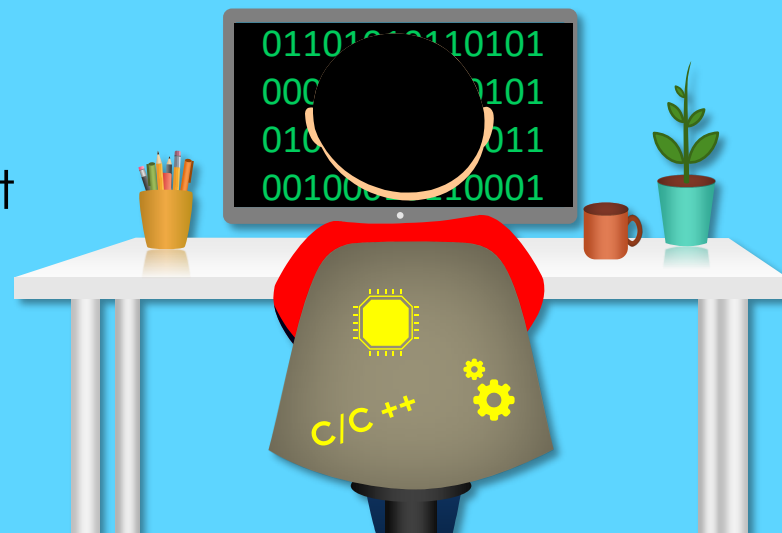
 **OS** (Linux / Android / WEC)

 **Computer architectures**

 **BIOS / kernel** level development

 **Filesystem** customization

 **FW design** (uC/FPGAs)





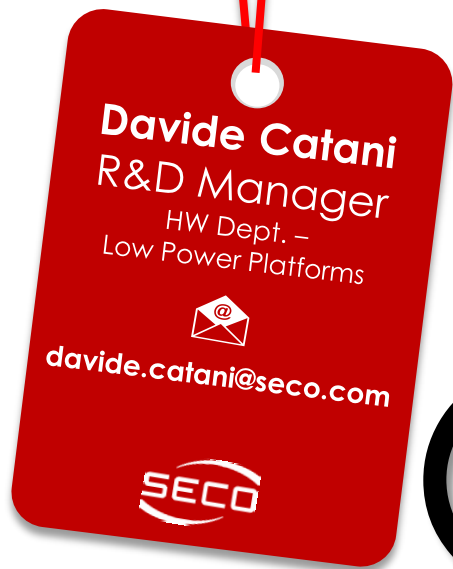
Invia le tue proposte e CV a

<http://www.seco.com/it/lavora-con-noi>





Posizioni aperte



GRAZIE